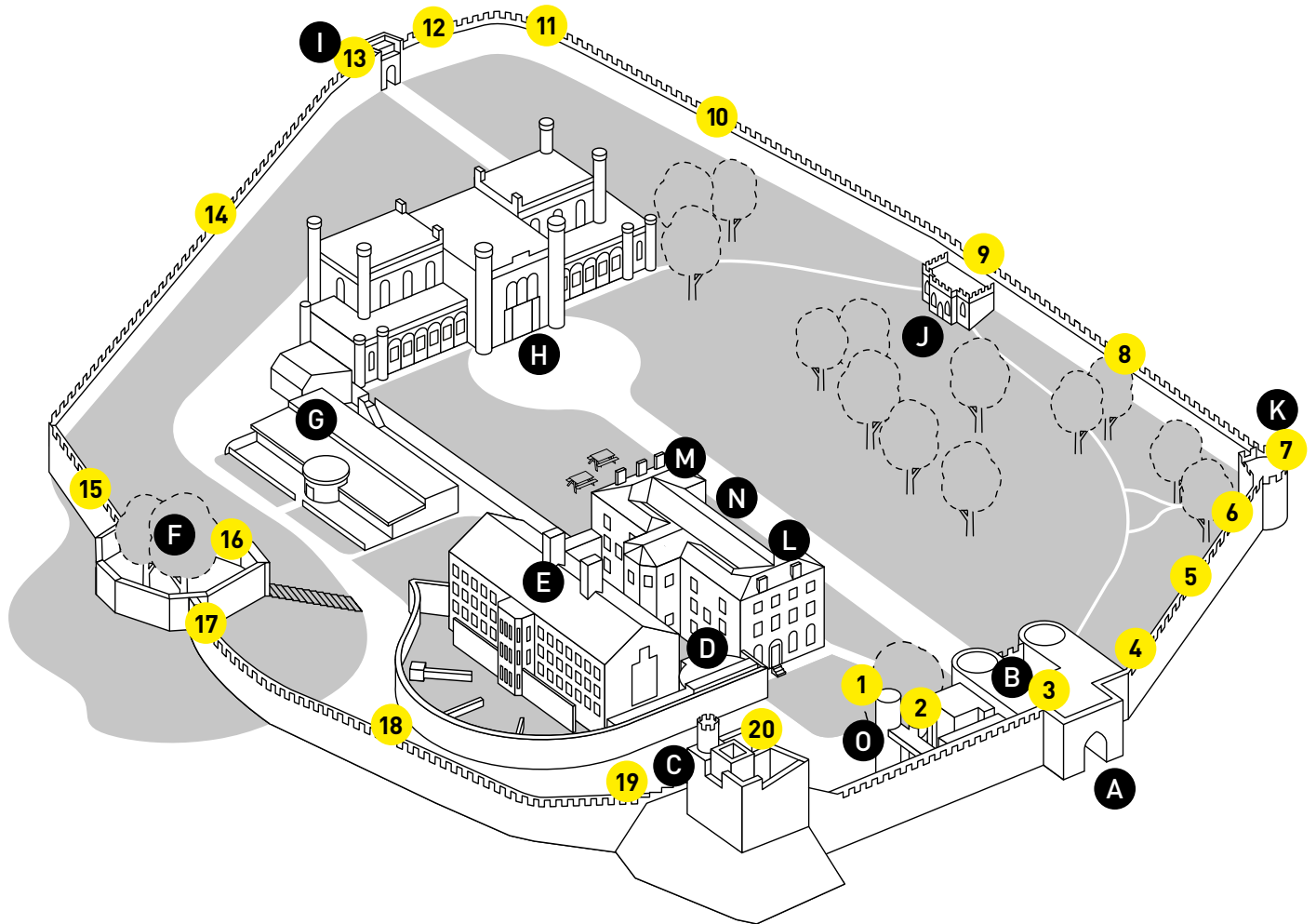


MAP



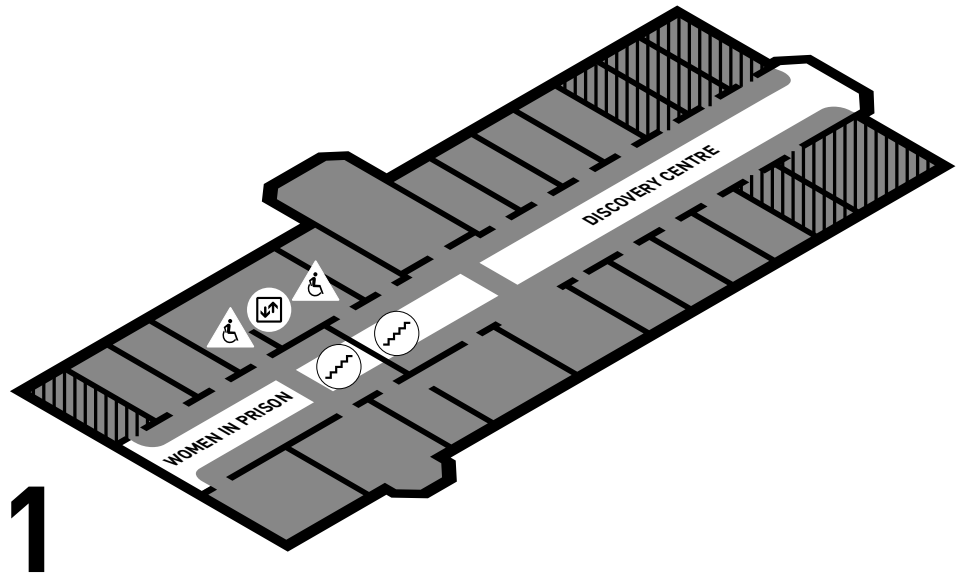
Key

- | | |
|---|---|
| A East Gate | K Cobb Hall |
| B Toilets | L Shop and Tickets |
| C Observatory Tower | M Café |
| D David P J Ross Magna Carta Vault | N Entrance to Magna Carta Vault and Victorian Prison |
| E Victorian Prison | O Entrance to Medieval Wall Walk |
| F Lucy Tower | |
| G Heritage Skills Centre (open on selected days) | |
| H Court House (not part of visitor attraction) | |
| I West Gate | |
| J Bath House | |

1 1-20 Medieval Wall Walk Audio Stops

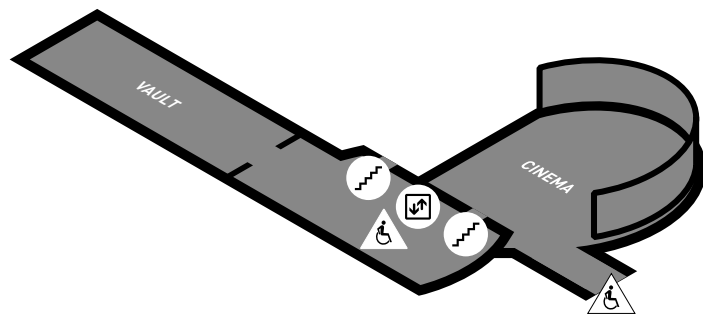
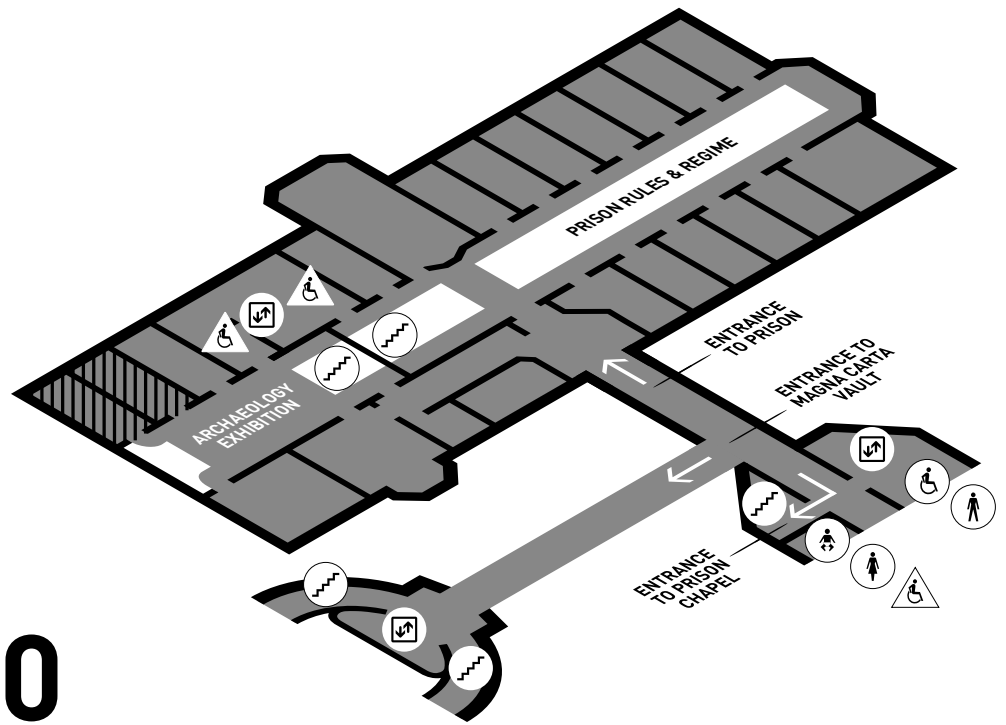
The Medieval Wall Walk is accessible for wheelchair users between the lift (O) and Cobb Hall (K). Please note that beyond Cobb Hall there are steps, uneven walkways and narrow sections. The wall walk is 1/3 mile long and there is no seating anywhere along it until Lucy Tower (F).

MAP

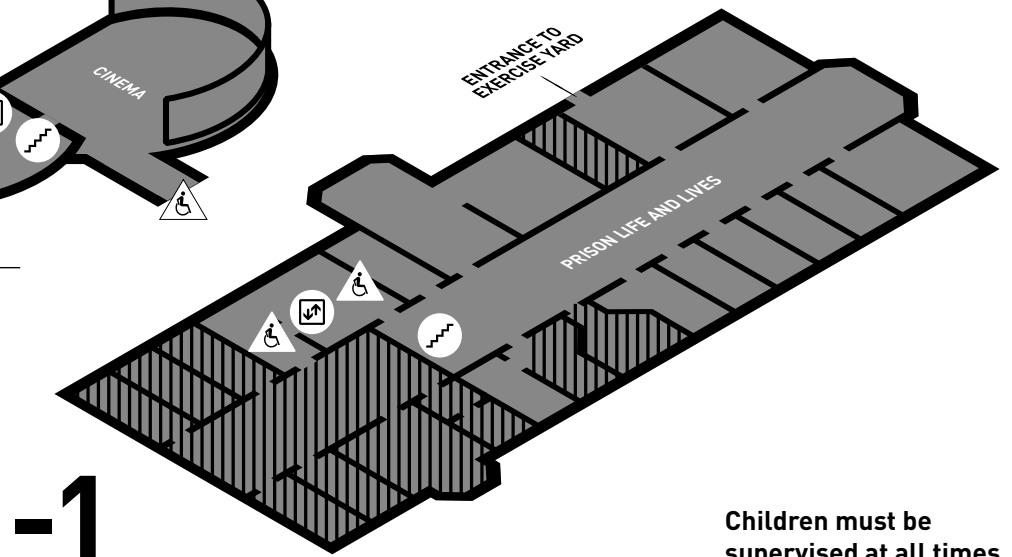


Key to symbols

- Male toilets
- Female toilets
- Disabled toilets
- Baby changing
- Lift
- Stairs
- Refuge point
- No public access



Magna Carta Vault



Children must be supervised at all times